



University Institute of Engineering

First Year Engineering

EXPREMENT :- 3.2

Student Name

UID :

Branch: Computer Science & Engineering

Section/Group:

Semester: 2nd

Date of Performance:18/04/22

Subject Name: DISRUPTIVE TECHNOLOGIES - 2

Aim: Design a two wheel line following robot integrated with infrared sensors.

COPPELIA ROBOTICS Features Videos Downloads Resources Contact

V-REP was discontinued. Discover Coppeliasim.

CoppeliaSim
from the creators of V-REP

Create. Compose. Simulate.
Any Robot.

The robotics simulator Coppeliasim, with integrated development environment, is based on a distributed control architecture: each object/model can be individually controlled via an embedded script, a plugin, a ROS node, a remote API client, or a custom solution. This makes Coppeliasim very versatile and ideal for multi-robot applications. Controllers can be written in C/C++, Python, Java, Lua, Matlab or Octave.

Coppeliasim is used for fast algorithm development, factory automation simulations, fast prototyping and verification, robotics related education, remote monitoring, safety double-checking, as digital twin, and much more. You can find a feature overview here.

News

CoppeliaSim Release 4.3.0 is out (Jan. 27th 2022)
-> [Change log here](#) <-

CoppeliaSim Release 4.2.0 is out (April 6th 2021)
-> [Change log here](#) <-

CoppeliaSim Release 4.1.0 is out (July 21st 2020)
-> [Change log here](#) <-

Type here to search

31°C 8:53 PM 4/18/2022



University Institute of Engineering

First Year Engineering

Blackboard Collaborate | Bb Collaborate - Fri_3_Practical | coppelia robotics - Search | Downloads - Coppelia Robotics

https://www.coppeliarobotics.com/downloads

COPPELIA ROBOTICS

Features Videos Downloads Resources Contact

You are downloading CoppeliaSim V4.3.0 rev3 for Windows (installer package). Want to choose a different platform?

	player	edu	pro
Full simulation functionality	✓	✓	✓
Full editing capabilities		✓	✓
Commercial usage	✓		✓
	Free for everyone. Freely distributable.	May only be used by students, teachers, professors, schools and universities.	No usage restrictions. Contact us for pricing.

Download CoppeliaSim Player Download CoppeliaSim Edu Download CoppeliaSim Pro

Previous versions of CoppeliaSim / V-REP

Type here to search

CoppeliaSim Edu - New file - rendering: 4 ms (8.0 fps) - SIMULATION STOPPED

File Edit Add Simulation Tools Modules Scenes Help

Model browser

- components
- equipment
- examples
- furniture
- household
- infrastructure
- nature
- office items
- other
- people
- robots
- mobile
- non-mobile
- tools
- vehicles

7 DoF manipulator.ttm

new scene

Scene hierarchy

- new scene (scene 1)
 - DefaultCamera
 - XYZCameraProxy
 - DefaultLights
 - Floor

Selected objects:

EDU

Please visit www.coppeliarobotics.com to verify that you are running the last CoppeliaSim version.

Input Lua code here, or type "help()" (use TAB for auto-completion) Sandbox script

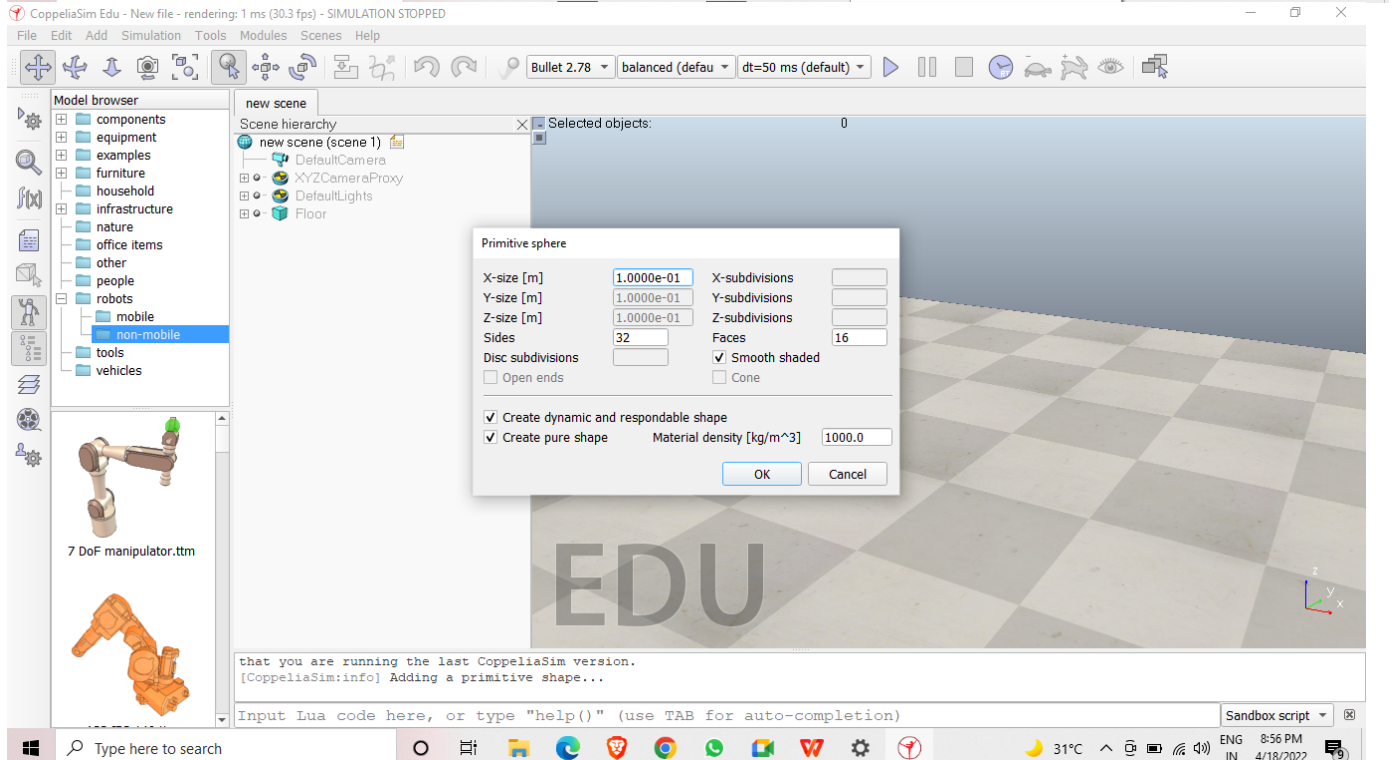
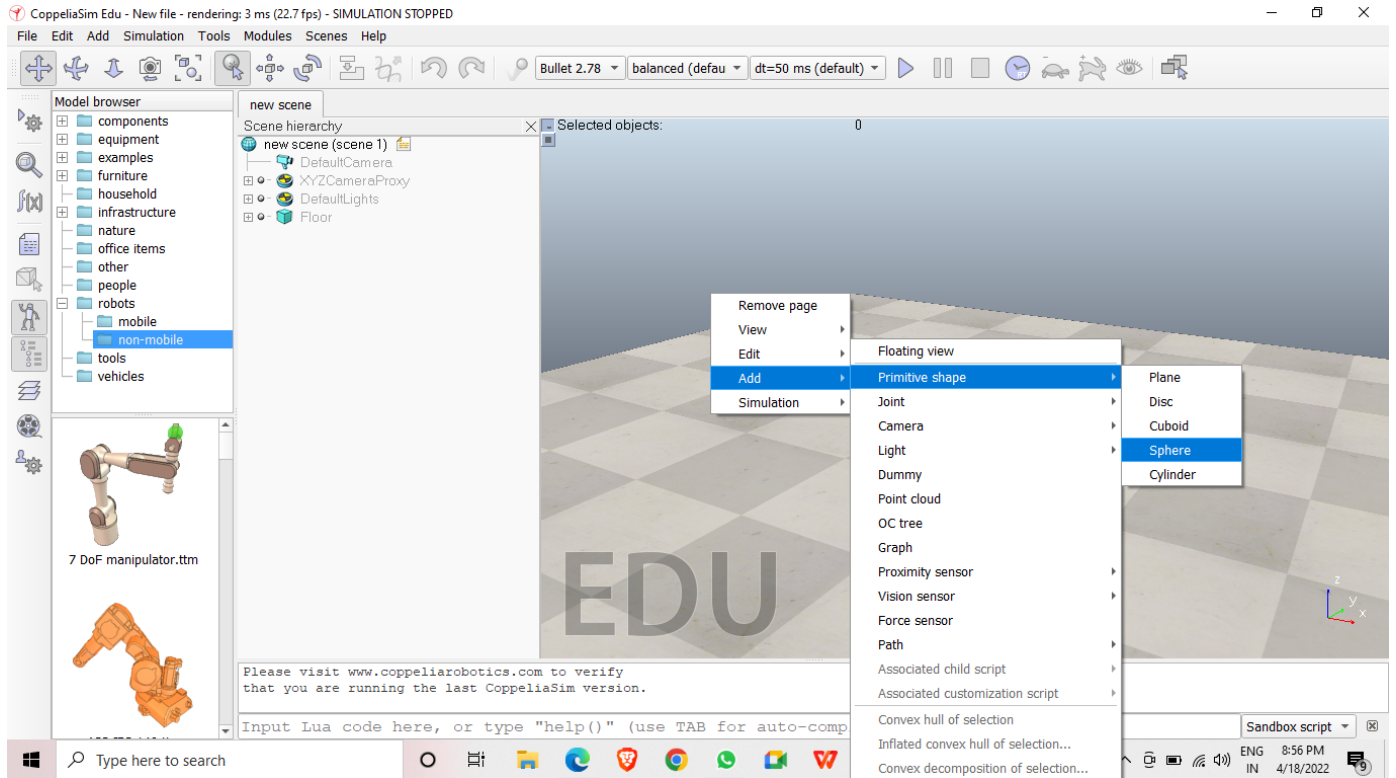
Type here to search

31°C 8:54 PM 4/18/2022



University Institute of Engineering

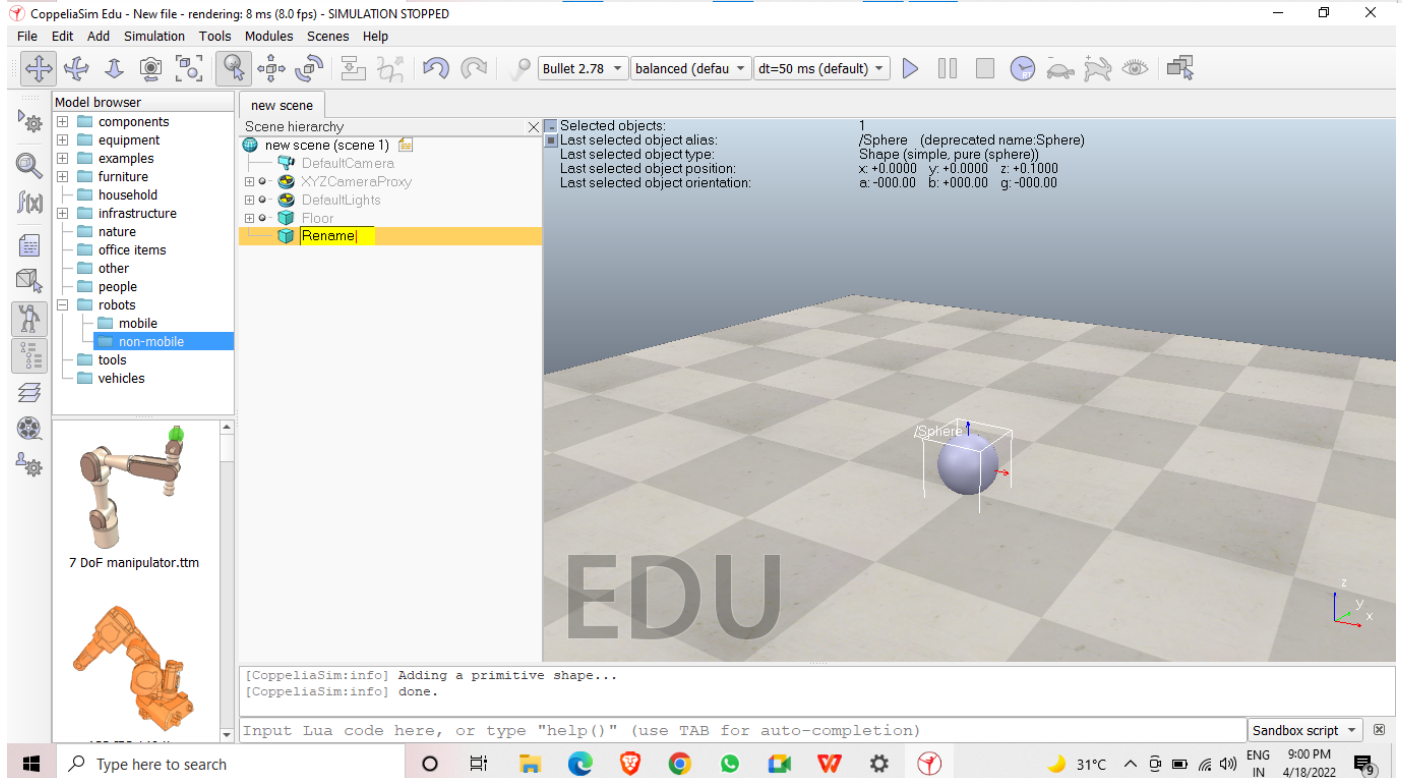
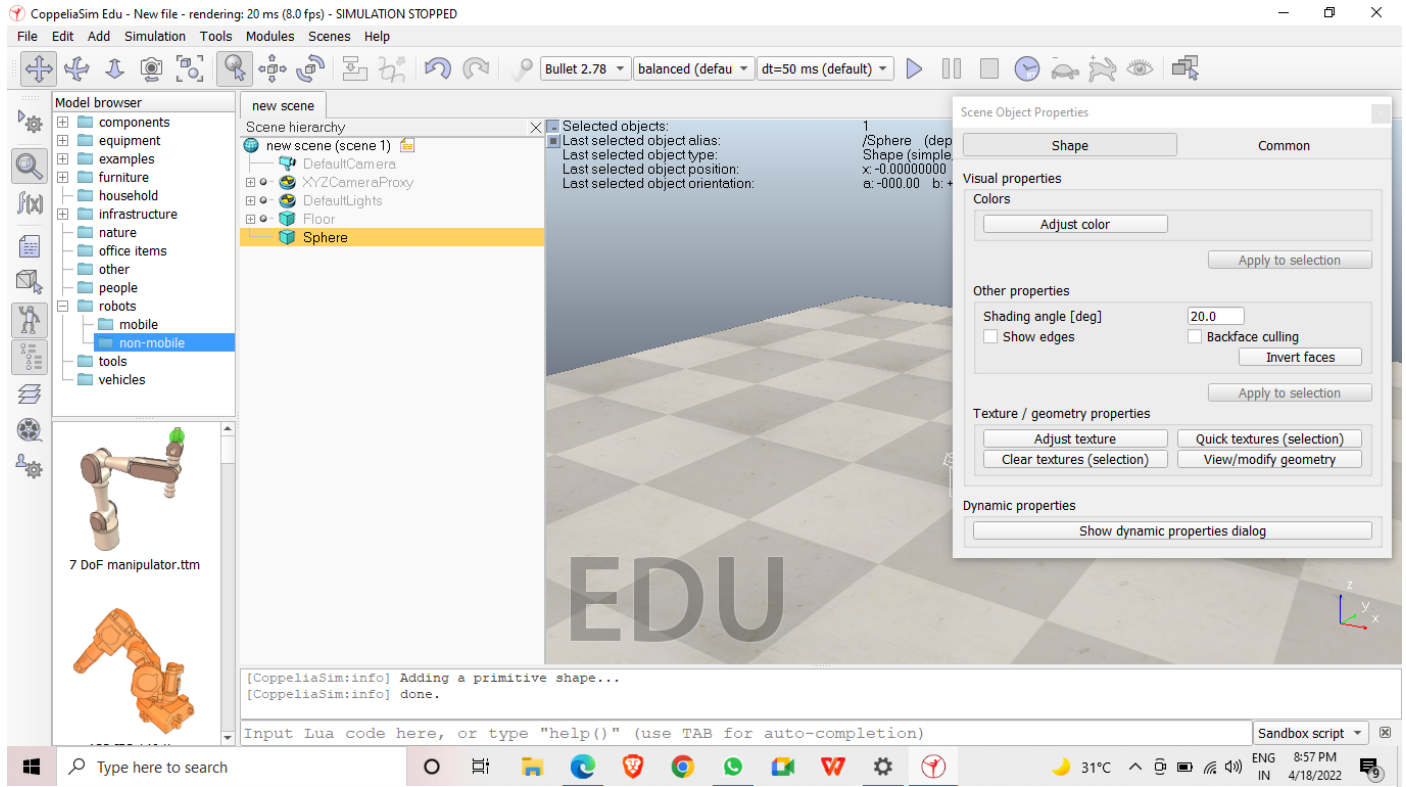
First Year Engineering





University Institute of Engineering

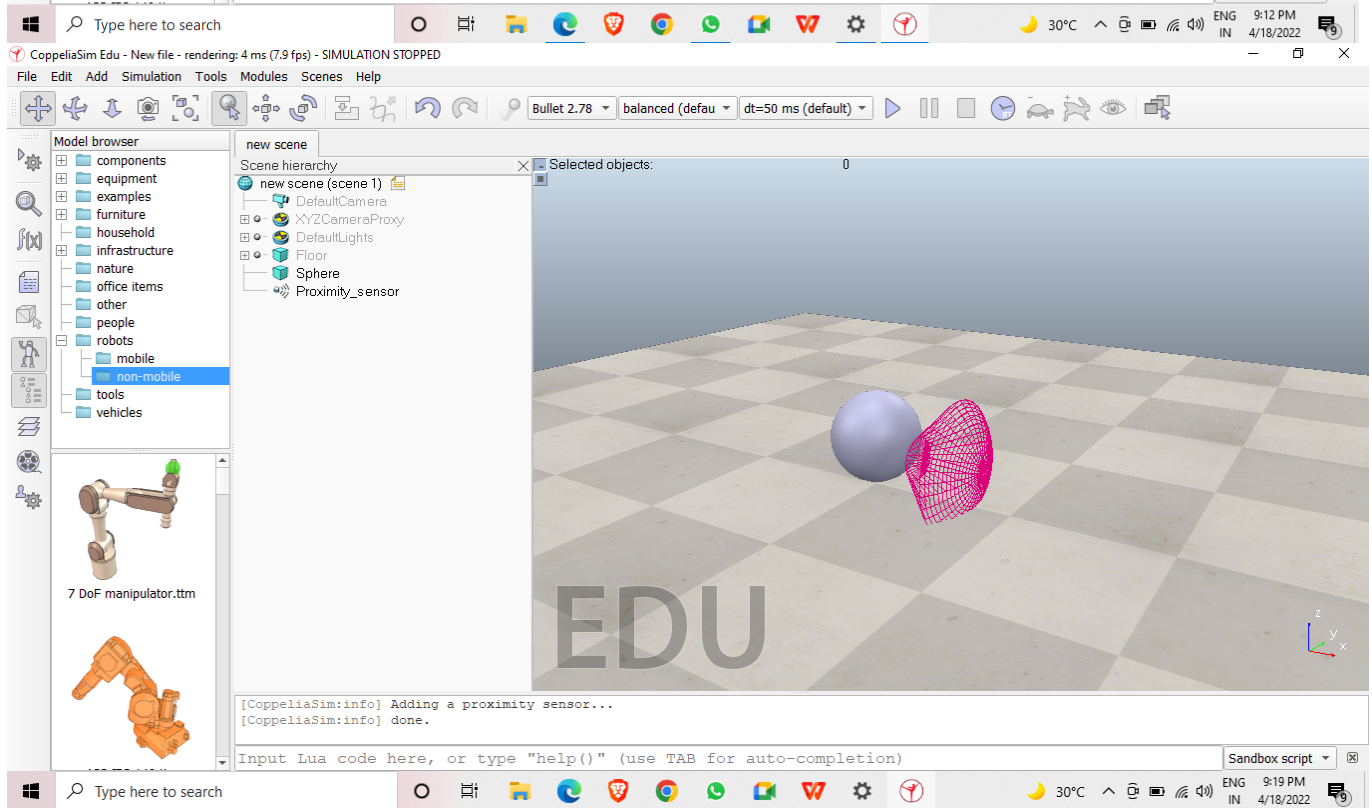
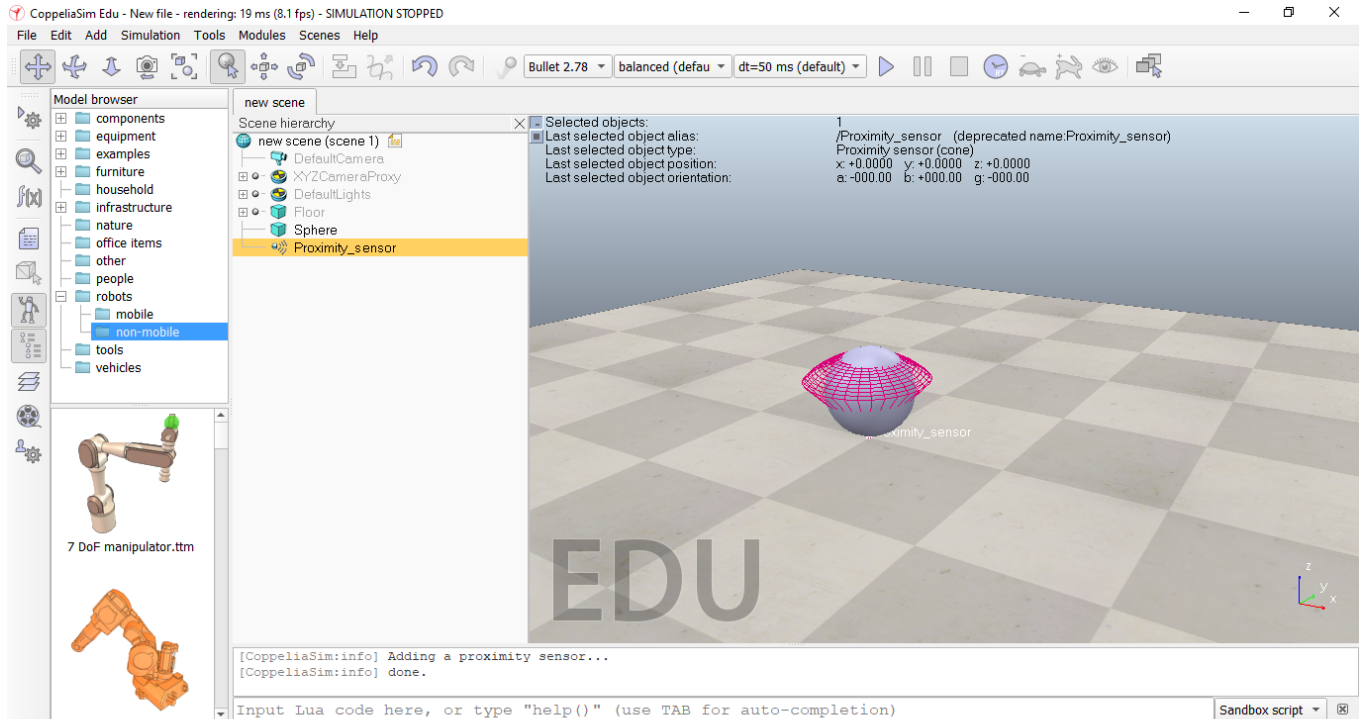
First Year Engineering





University Institute of Engineering

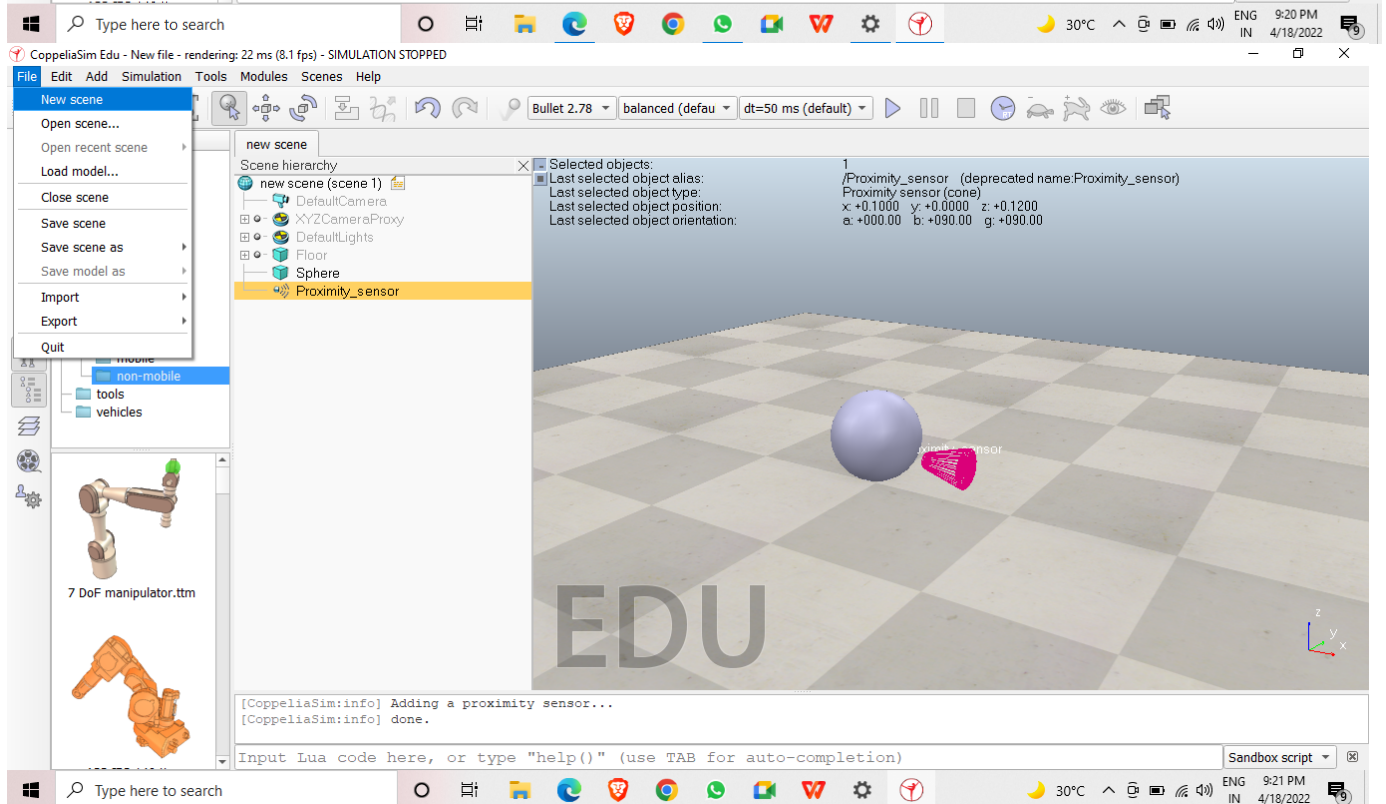
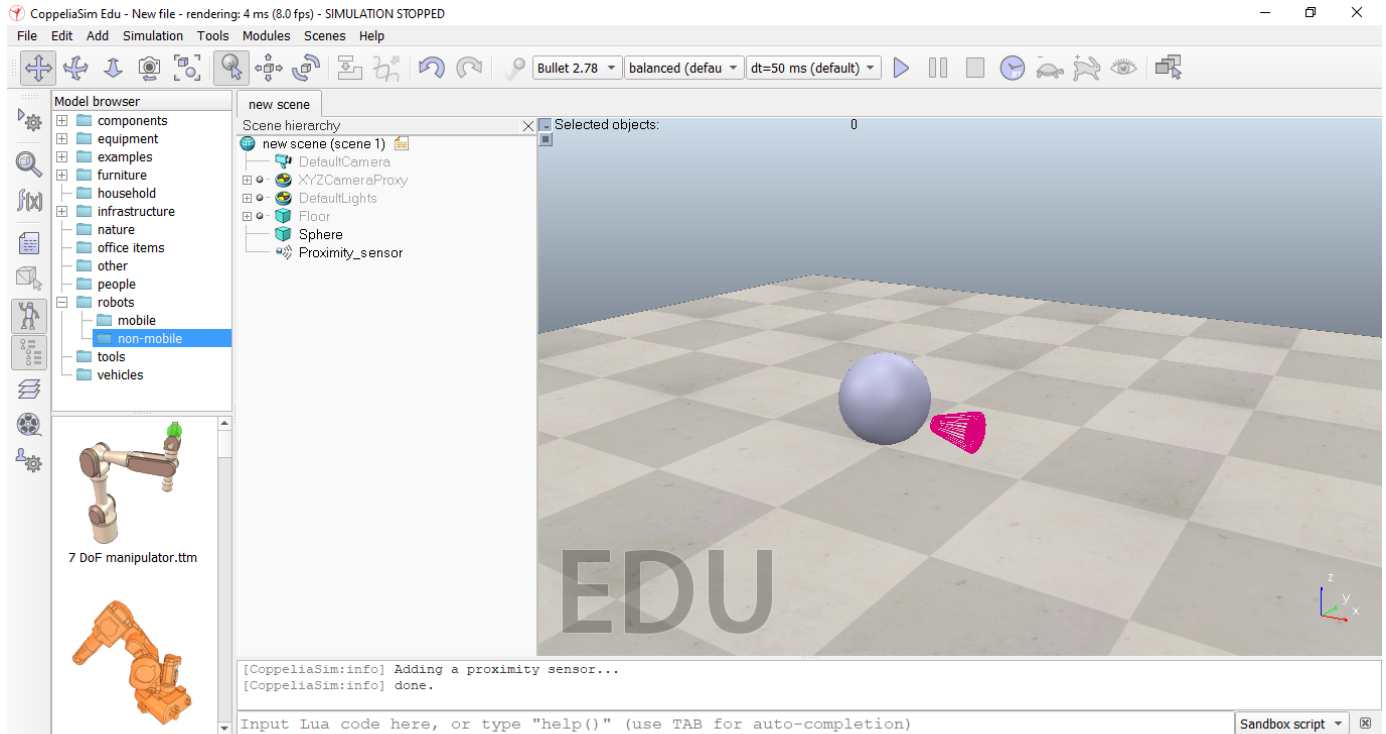
First Year Engineering





University Institute of Engineering

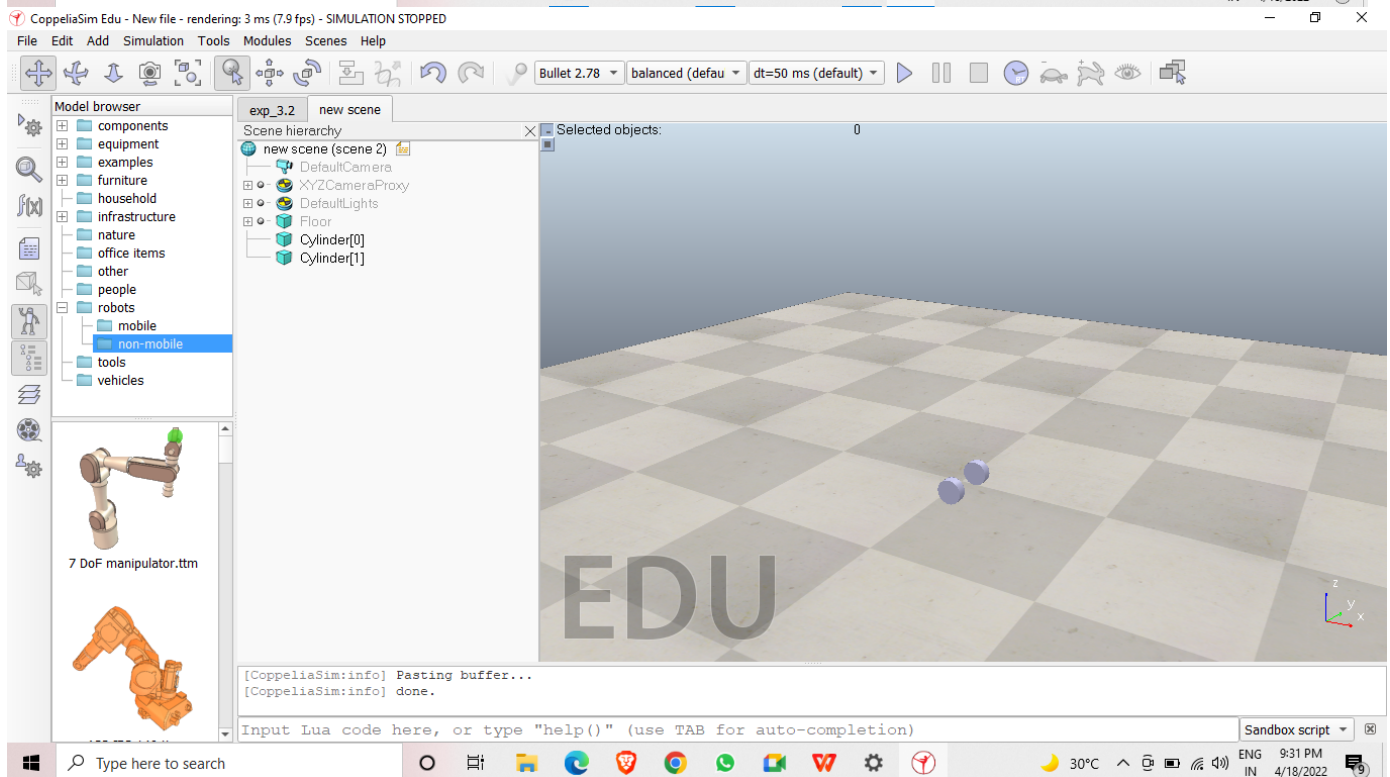
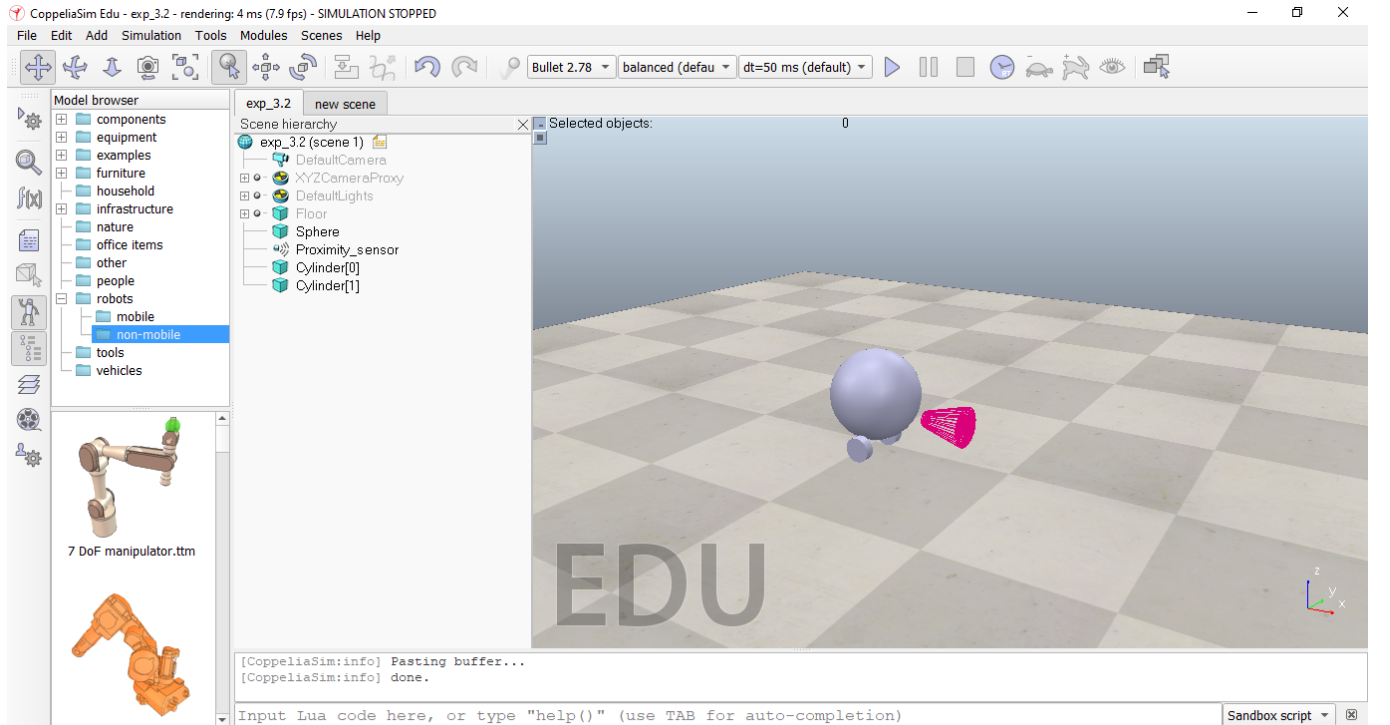
First Year Engineering





University Institute of Engineering

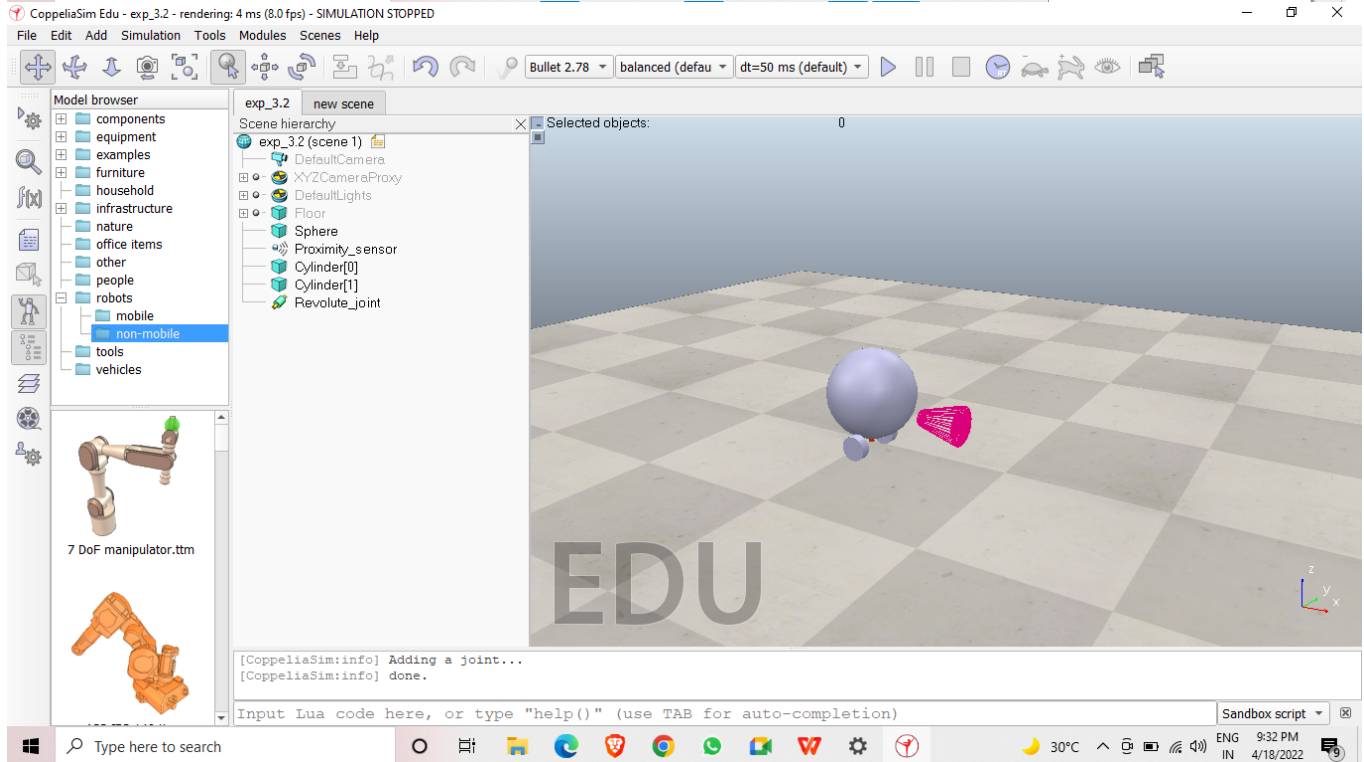
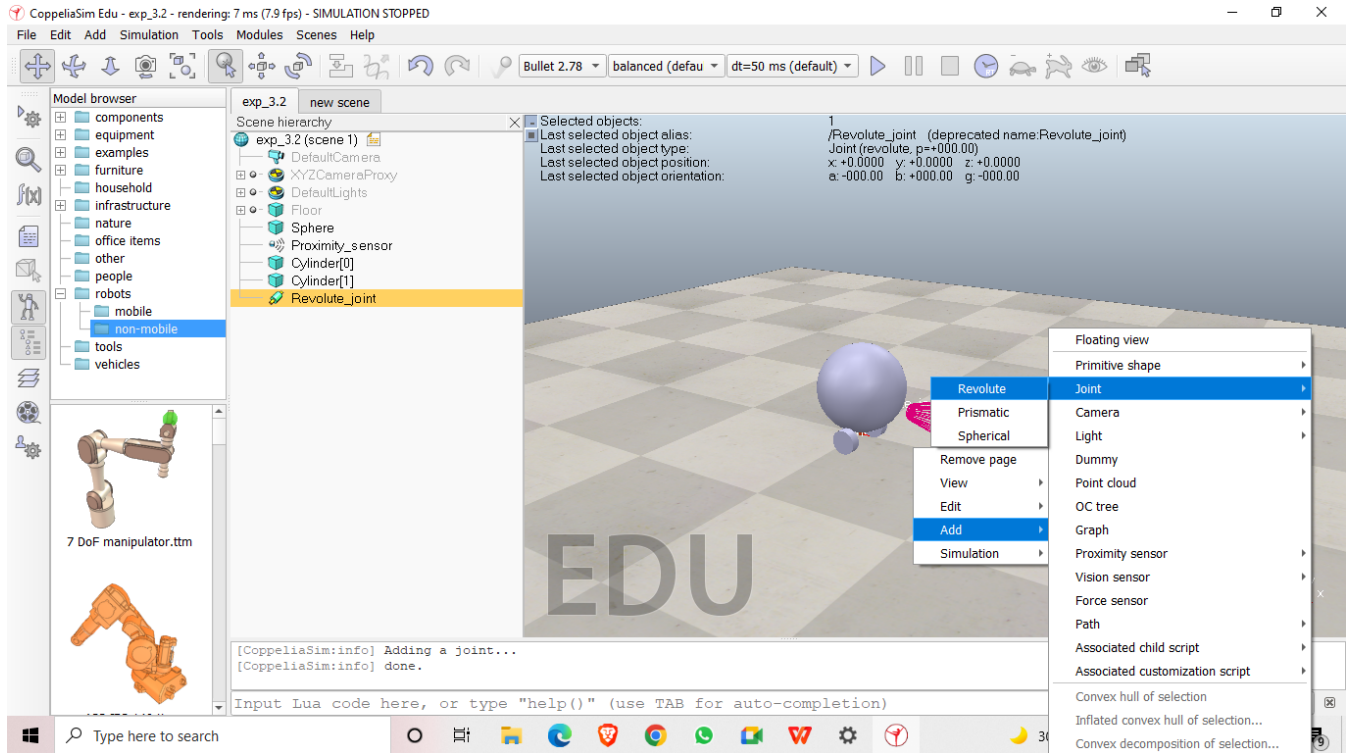
First Year Engineering





University Institute of Engineering

First Year Engineering





University Institute of Engineering

First Year Engineering